

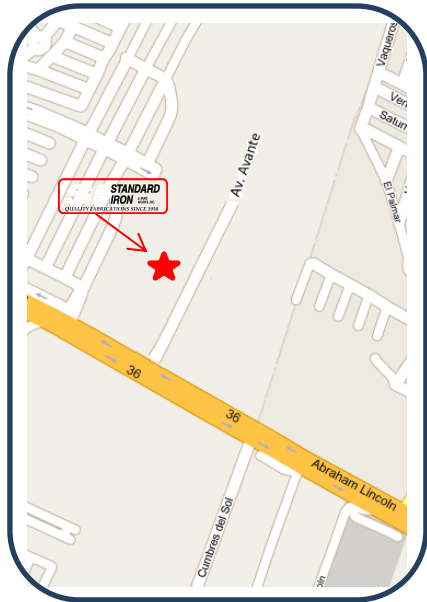


SIWW de México, S de R.L. de C.V.
 Av. Avante #301
 Parque Industrial Avante Monterrey
 García, N.L. C.P. 66023
 Phone: 001 52 81 1878 0840
www.std-iron.com

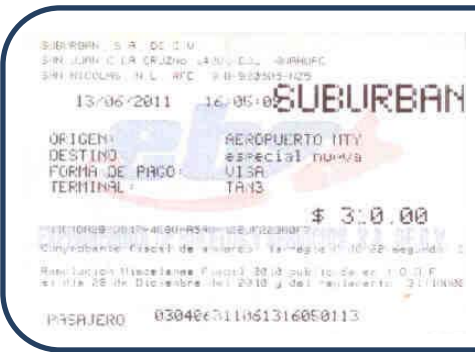
ACCOMMODATIONS:

Courtyard by Marriott Monterrey
 Av. San Jeronimo No. 1012
 Col. San Jeronimo 64640
 Monterrey, Nuevo Leon, Mexico
 01-800-561-4761

[Click this link to Courtyard by Marriott Monterrey](#)



From the International Airport: Travel West on Carretera Federal 54 at Apodaca downtown turn right and follow the road Sta. Rosa (Carretera 910) to Arco Vial, take exit to Abraham Lincoln Avenue and travel 4 km (2.5 mi) to East. In front of “Club Deportivo Las Fuentes” is the main entrance to the industrial park. SI is located at #301 Avante Avenue (left-hand side).



Taxi Information:

- ✓ Zone 5
- ✓ Cab company: Suburban
- ✓ Approximate cost of cab ride from airport to Standard Iron Facility: \$310 pesos